



**Drumnahough**  
Wind Farm

# Public Information Evening

December 2025





# Welcome

## Public Information Evening December 2025

Thank you for visiting our Public Information Evening related to the construction phase of Drumnahough Wind Farm. Please take your time viewing the information on display. If you have any questions or feedback, our Project Team is here to talk to you. You can also fill out a Feedback Form or contact us via phone, email, or post after today's event.

The purpose of this event is to provide you with information on Drumnahough Wind Farm; to update you on our activities and plans and to provide an opportunity for the local community to ask any questions regarding the project throughout its construction phase. In addition, our various contractors are also present today for businesses wishing to learn more about local supply chain opportunities linked to the project's delivery.



You can also view all the information on display this evening via our project website, which can be found online at **[sserenewables.com/drumnahough](https://sserenewables.com/drumnahough)** or by using this or by using this QR code.

### Contact Us



Email us at **[clo@sse.com](mailto:clo@sse.com)**



Call our Community Liaison Officer, **Seamus Herron** on **087 919 5467**



Write to us at **SSE Renewables, Red Oak South, South County Business Park, Leopardstown, Dublin D18 W688**

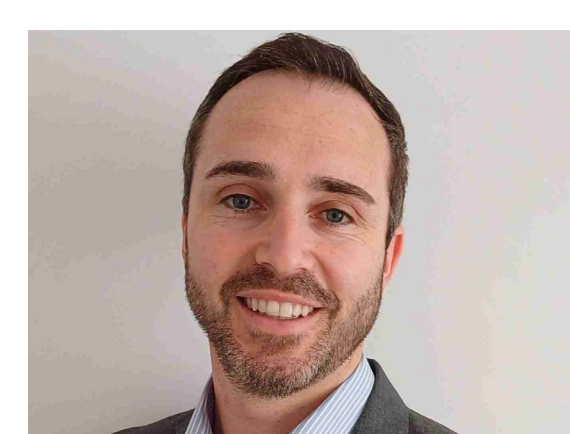


Visit our website: **[sserenewables.com/drumnahough](https://sserenewables.com/drumnahough)**

### Meet the Team



**Patrick Greene**  
Construction Project Director  
SSE



**Séamus Todd**  
Project Manager  
FuturEnergy Ireland



**Seamus Flanagan**  
Construction Manager  
SSE



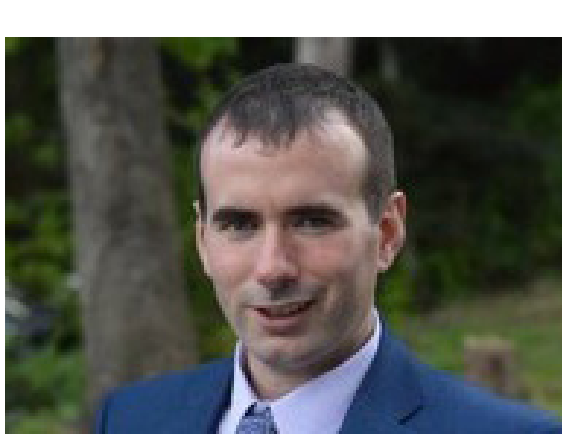
**James Carberry**  
Land Manager  
SSE



**Seamus Herron**  
Community Liaison Officer  
SSE



**Conor Joy**  
External Relations Manager  
SSE



**Brian McMenamin**  
Development Project Manager  
SSE



**Luke Jennings**  
External Relations Manager  
SSE



# SSE Renewables & FuturEnergy Ireland



SSE Renewables is a leading developer and operator of renewable energy generation, focusing on onshore and offshore wind farms, hydro-electric power and flexible battery storage technologies. It is part of electricity infrastructure company SSE plc, a FTSE-100 company with operations across the UK and Ireland, and a presence in carefully selected international markets. SSE Renewables delivers clean power assets to increase SSE's operational renewable generation capacity as part of the company's five-year investment plan to 2030. This includes delivery of the world's largest offshore wind farm in construction, the 3.6GW Dogger Bank Wind Farm. SSE Renewables operates some of the leading onshore wind farms in Ireland including the 174MW Galway Wind Park in Connemara and the 73MW Slieve Kirk Wind Park outside Derry City.

## **FuturEnergy** Ireland

FuturEnergy Ireland is a leading Irish wind developer established in 2021 as a stand-alone joint venture between Coillte and the ESB. The company was formed to maximise the potential of Ireland's unique wind and land resources and accelerate Ireland's transformation to a low carbon energy economy.

FuturEnergy Ireland is targeting the development of 1GW of renewable energy by 2030 by advancing high quality, carefully considered onshore wind and battery storage projects. These projects, once delivered, would power an estimated 730,000 homes annually, make a significant contribution to Ireland's commitment to produce 80% of electricity from renewable sources by the end of this decade, and deliver material emissions reductions.

### **Our Work Together**

SSE Renewables and FuturEnergy Ireland's co-development portfolio consists of Drumnahough Wind Farm and six additional projects in Donegal, Mayo, Kerry and Cork. Included among these projects is the neighbouring Lenalea Wind Farm which reached full power and connected to Ireland's national grid in late 2023. The combined output of these projects is roughly 600MW, with projects at varying stages of development. Together, SSE Renewables and FuturEnergy Ireland are investing millions into the local economy, creating rural employment and leading the way on Ireland's path to net-zero.



**Lenalea Wind Farm official opening day, May 2024.**



# Wind Farm Overview

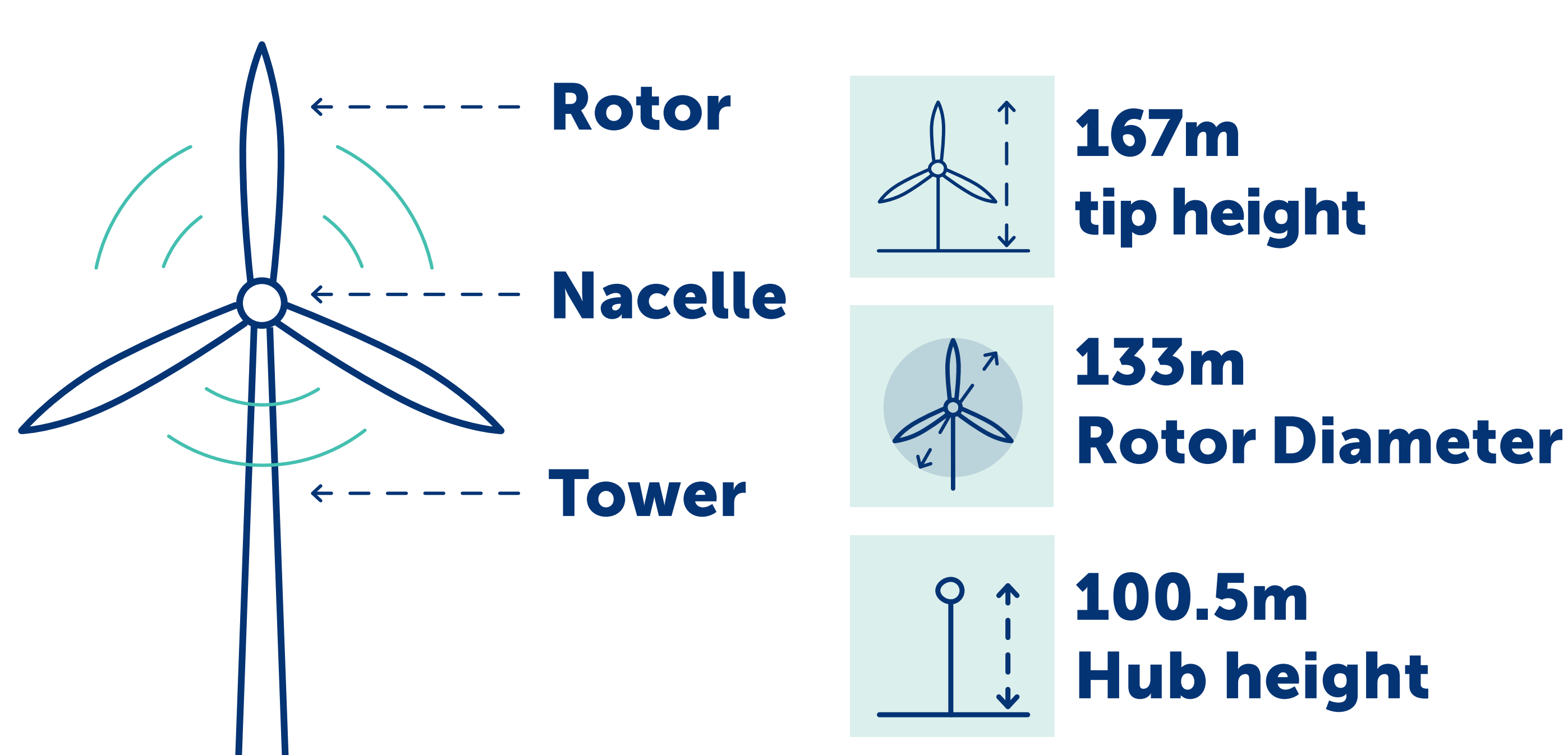
Drumnahough Wind Farm is an onshore wind project being co-developed by SSE Renewables and FuturEnergy Ireland. Turbines and ancillary site works will be located in in the townlands of Tooslenagh, Treankeel, Meenadaura, Carrickalangan, Cark, Killymasny, Meentycat, Meenalaban, Culliagh, Tullyhonour and Aughkeely. The majority of lands at the Drumnahough Wind Farm site are owned by Ireland’s semi-state forestry company: Coillte.

The project is located approximately 13km south-west of Letterkenny, adjacent to an existing cluster of SSE-owned wind farms; Culliagh and Meentycat (including Cark and Meenbog extensions) and Lenalea Wind Farm, co-developed with FuturEnergy Ireland.

Drumnahough will consist of 12 turbines of 167m tip height and will be capable of generating 58MW of green energy, contributing to Ireland’s 2030 renewable energy targets. When complete it will significantly contribute to SSE and FuturEnergy Ireland’s wind energy portfolios.

A wind farm at this location was previously consented by Donegal County Council in March 2009 for a 15-turbine project. As project build-out was not possible at the time, a new planning application was submitted for the project to An Bord Pleanála (now An Coimisiún Pleanála) in late 2020. This followed a period of extensive public engagement which took place in 2019 and 2020.

In September 2022, An Bord Pleanála granted planning permission to SSE and FuturEnergy Ireland to develop the project. SSE Renewables will lead the development and construction of the project and will operate the wind farm on completion.



**Key**     Site Boundary     Proposed Turbine



**Map 1:** Site layout for Drumnahough Wind Farm including site boundary (red line) and the twelve turbine locations.



Continued

# Wind Farm Overview

## Grid Connection

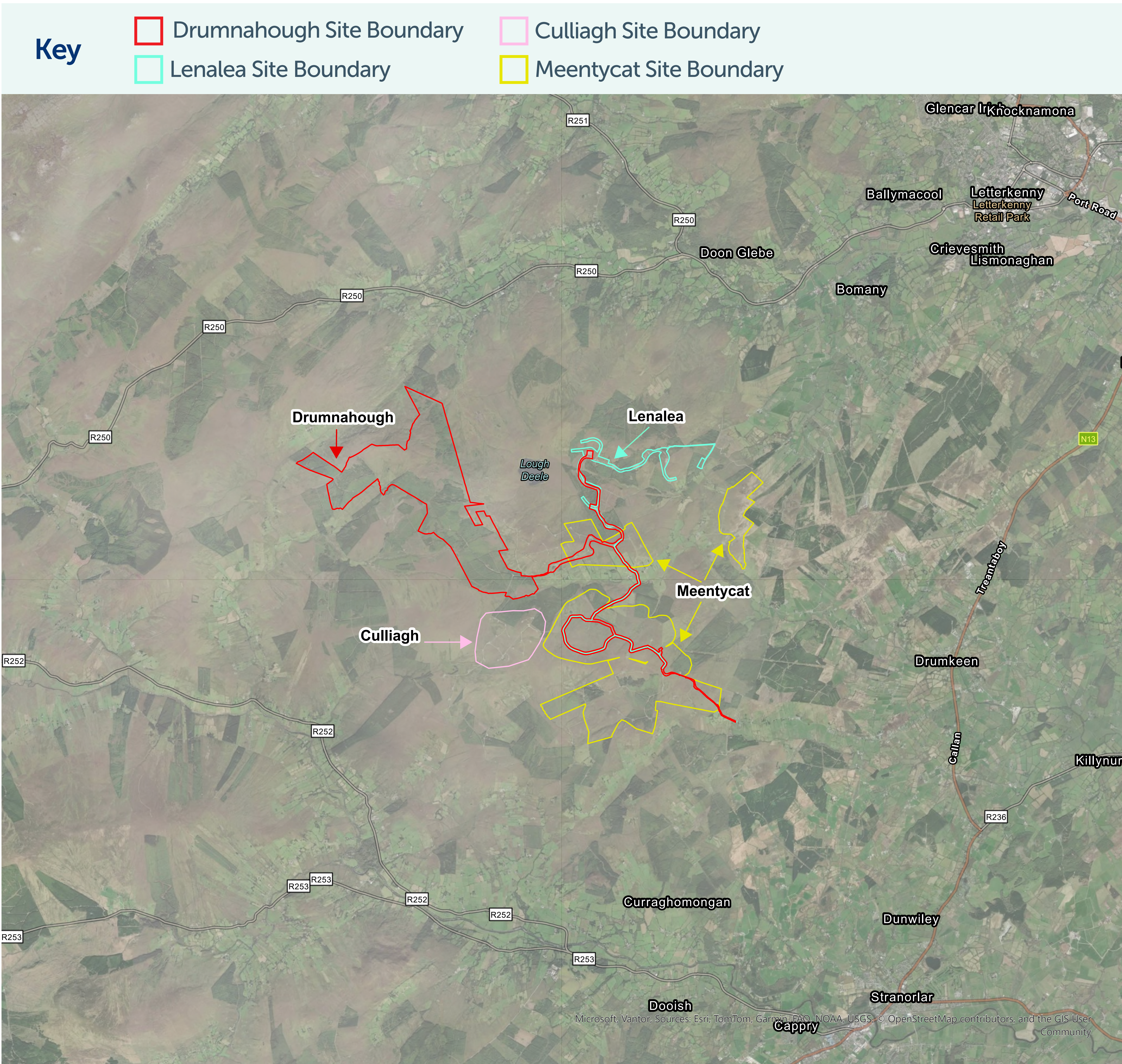
Drumnahough Wind Farm will connect to the national electricity grid through the existing Lenalea 110 kV substation. This ensures the clean energy generated can be delivered to homes and businesses across Ireland. The Lenalea Substation will be extended slightly to accommodate a grid transformer and an Independent Power Producer (IPP) building. These additions are essential for linking the wind farm to the grid.

## Environmental Management and Biodiversity Enhancement

All construction activities at Drumnahough Wind Farm will follow a strict Construction Environmental Management Plan (CEMP). This includes measures to prevent pollution, manage waste responsibly, and protect local watercourses. Dedicated environmental roles will oversee compliance throughout the project.

We are committed to protecting cultural heritage. A qualified Archaeological Clerk of Works will monitor excavation works, and any discoveries will be managed in line with planning conditions to safeguard historic features.

The project will deliver biodiversity enhancement by restoring habitats, enhancing local ecology and leaving the natural environment in a better state than before construction. Our nature positive approach includes restoring habitats, such as converting conifer plantations on damaged peat back to wet heathland, and protecting irreplaceable habitats like blanket bog. We have completed baseline biodiversity assessments and will monitor progress to deliver ecological enhancement.



**Map 2:** Site boundaries of the respective Drumnahough (SSE-FEI – started pre-construction 2025), Lenalea (SSE-FEI – operational since 2023), Meentycat (SSE – operational since 2004, with extensions complete in 2009) and Culliagh (SSE – operational since 2000) wind farms. For reference, Letterkenny is located to the north-east and Stranorlar to the south-east.



# Project Benefits

## Climate

Onshore wind farms such as Drumnahough Wind Farm are a vital part of Ireland's transition to a cleaner, more sustainable future. Drumnahough will support the delivery of Ireland's legally binding climate targets. Expanding onshore wind energy helps meet this target by providing a reliable, low-carbon power source that reduces our dependence on fossil fuels, enhances energy security, and supports local and national climate goals.

## Economic

The project will bring significant benefits to the local and regional economy, including:

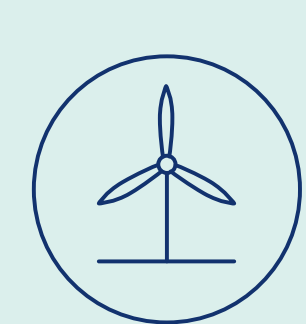
- Final delivery and completion of the project will represent a €120 million investment.
- Supporting around 60 full-time and direct jobs at peak delivery.
- Annual commercial rates payments to Donegal County Council, contributing towards services such as roads, local infrastructure and public services.
- Investment in the local economy through direct and indirect employment and supply chain involvement.

The economic impact of Drumnahough Wind Farm also builds on the contribution which SSE and FuturEnergy Ireland has already made in Donegal through the construction of Lenalea Wind Farm (completed in 2023). Construction of that project involved a joint total capital investment of over €40 million, with 35 jobs supported at peak project delivery and over 150,000 working hours recorded using regional contractors, employing a significant workforce locally.

## Community

Over its lifetime, Drumnahough Wind Farm project will bring a range of benefits to the local area, including a substantial community benefit fund becoming available to support local groups and organisations once the project enters commercial operation. This compliments existing community funding provided through the Meentycat & Culliagh Community Benefit Fund and the Lenalea Community Benefit Fund.

### Key Benefits



**€120 million capital investment**



**Creation of approximately 60 jobs**



**Provide up to 58MW of green, renewable energy**



**Contribute to Ireland's binding climate targets**



**Investment in the local economy and communities**



**Significant annual Community Benefit Fund**





# Local Supply Chain

SSE's local supply chain initiative focuses on creating economic benefits for local communities through our energy projects. This is achieved by working with local and national suppliers.

In April 2024, SSE Renewables hosted an online Meet the Buyer event, benefitting Irish supply chain companies, for renewables contract and tender opportunities related to the progression of our renewable energy pipeline, including Drumnahough Wind Farm.

**On Drumnahough, we were recently happy to announce that:**

**SORENSEN**

**Sorensen Civil & Marine Engineering** has been appointed to deliver the Civil Balance of Plant (CBoP) works for Drumnahough Wind Farm.

**OMEXOM**

**Omexom** has been appointed to deliver the Electrical Balance of Plant (EBoP) works. Omexom was previously contracted to SSE Renewables and FuturEnergy Ireland in the delivery of Lenalea Wind Farm.

**NORDEX**

German wind turbine manufacturer **Nordex Group** will lead on turbine installation and commissioning.

Representatives from each of our contractors are present today for businesses wishing to learn more about local supply chain opportunities linked to Drumnahough Wind Farm's delivery.



**Please fill out our Feedback and Expression of Interest Form outlining your business details and contact details.**





# Traffic Management and Turbine Deliveries

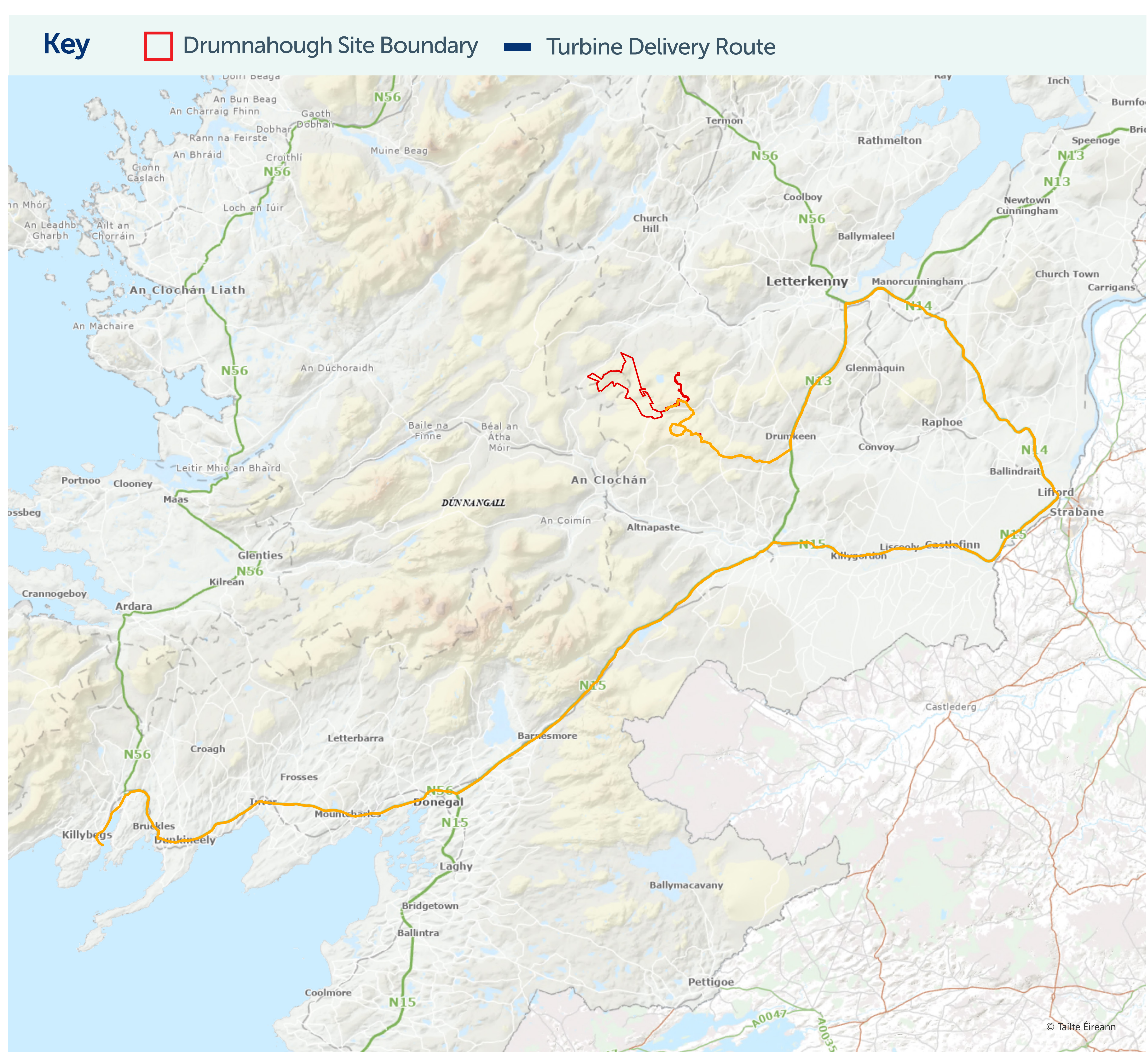
## Traffic Management

During construction, a comprehensive Traffic Management Plan will be in place to minimise congestion and ensure safety for all road users. Regular maintenance and inspection of vehicles and equipment will be carried out to ensure efficient operation and reduce emissions. All site vehicles and machinery will be switched off when not in use to avoid unnecessary idling. The majority of aggregate materials (construction materials such as crushed stone, gravel, sand) for the wind farm will be sourced from on-site borrow pits, reducing the number of delivery vehicles and associated traffic on local roads.

## Turbine Deliveries

The turbine components will be delivered to Killybegs Harbour and will be carefully managed to minimise disruption. The timing of turbine deliveries along the designated haulage route will be agreed in advance with Donegal County Council and An Garda Síochána, ensuring that oversized loads travel at times that least impact the public. Detailed arrangements will be made for the protection of bridges and other structures along the route, and all deliveries will follow the approved Traffic Management Plan.

Deliveries will include oversized loads, which will travel along approved national, regional, and local roads. These measures are designed to ensure safety and minimise disruption for local communities. See the map below outlining the turbine delivery route.



**Map 3:** Turbine delivery route maps for Drumnahough Wind Farm, beginning with delivery of turbine components to Killybegs Harbour.



# Noise & Shadow Flicker

## Noise

Strict planning guidelines on wind turbine noise exist to ensure the protection of residential amenity in the vicinity of proposed wind farms. Modern wind turbines are designed to minimise both aerodynamic and mechanical noise. The effects of noise related to Drumnahough Wind Farm were assessed as part of an Environmental Impact Assessment Report (EIAR), which was included in our planning application to An Bord Pleanála (now An Coimisiún Pleanála), in 2020 and will comply with wind farm planning guidelines. As part of this process, independent noise consultants undertook a noise assessment to consider the impact of the proposed turbines on nearby residential properties.

A background noise survey was also carried out at locations around the wind farm site, which allowed appropriate noise limits to be established in accordance with the guidelines. Predicted noise levels were calculated and compared to these limits, to ensure that the wind farm can be operated within the limits. Noise levels will again be measured during commissioning of the wind farm to verify compliance with the specified limits.

**During construction of Drumnahough Wind Farm, all works will be carried out during daytime hours—typically 7am to 7pm on weekdays and 7am to 2pm on Saturdays—with no work on Sundays or public holidays except in emergencies.** The Construction Team will follow strict best practice guidelines to keep noise levels as low as possible.

## Shadow Flicker

Shadow flicker is a phenomenon that occurs when the sun is behind the turbine blades, casting a moving shadow over a small opening in a building such as a window, which creates a flickering effect within the building. A shadow flicker assessment was carried out as part of the EIAR for Drumnahough Wind Farm. The turbines at Drumnahough Wind Farm will include shadow flicker control systems that automatically shut down when flicker is expected, a proven approach used at other wind farms.





# Community Benefit Funding

Drumnahough Wind Farm will have a substantial community benefit fund, once it becomes operational. This fund will be delivered under government best practice, designed in consultation with the local community and will help promote a range of community development, energy efficiency, climate action and other initiatives.

Consultation on the fund will begin in 2026. Following the example of our Lenalea Wind Farm Fund, this will likely comprise of extensive local engagement and the establishment of a Committee that will be made up of members of the local community surrounding Drumnahough Wind Farm. The Committee will be the decision-making body for the fund. A Consultation Report will be published after the establishment of the Committee, followed by the publication of a Community Benefit Funding Strategy and an initial call for funding applications after Drumnahough Wind Farm becomes operational.

A Construction Fund will also be available to support local community projects and initiatives throughout the construction phase of Drumnahough Wind Farm.

SSE already has a strong track record of delivering community benefit funding in County Donegal and has operated its Meentycat-Culliagh Fund since 2007, while the Lenalea Wind Farm Fund distributed its initial round of funding earlier this year, following the wind farm becoming operational in late 2023.





# Community Engagement and Project Timeline

Our commitment is to engage inclusively with all our stakeholders. Through open dialogue, we aim to design and build projects that contribute to local sustainable development, while supporting and enhancing a sense of community spirit and solidarity.

Preparatory works at Drumnahough Wind Farm are underway. Working together, SSE Renewables and FuturEnergy Ireland intend to construct Drumnahough Wind Farm in a manner which minimises disturbance to the local community from construction commencement to completion, and into operations.

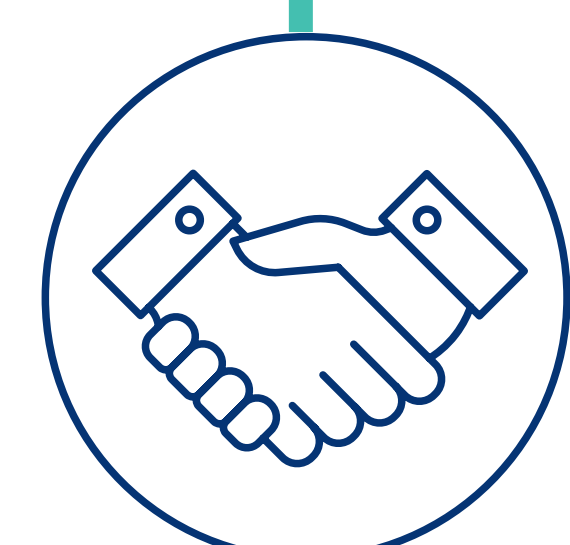
Our Community Liaison Officer, Seamus Herron, is based locally and can be contacted throughout the construction phase of the project. In addition, regular updates will be circulated to near neighbours and other local stakeholders in the form of letters and newsletters at regular intervals.

Outlined below is an **indicative** timeline and key project milestones linked to the construction phase of Drumnahough Wind Farm.



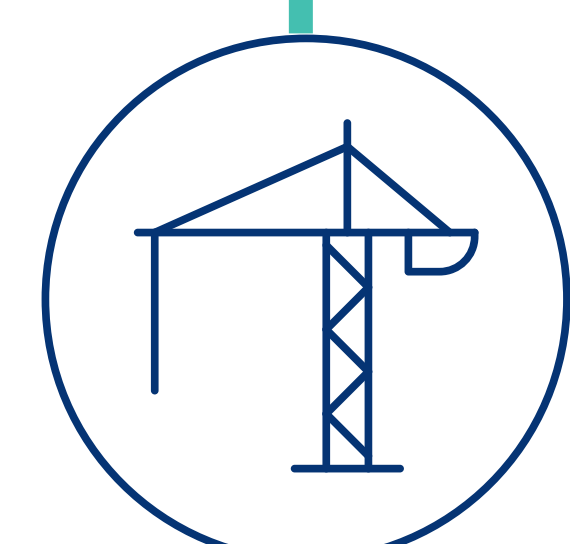
## November 2025

Commencement of preparatory works



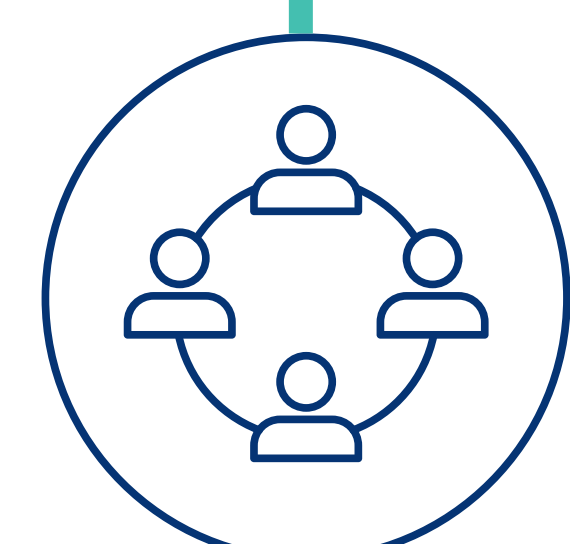
## December 2025

Public Information Events



## January 2026

Construction starts



## 2026

Start of Drumnahough Community Benefit Fund Public Consultation



## Early 2027

Turbine deliveries from Killybegs Harbour commence with turbine installation to follow





# Thank You

## Thank you for taking the time to visit our Public Information Event.

We hope you found the information on display and discussions with our Project Team useful.

We welcome your feedback and any queries on Drumnahough Wind Farm throughout its construction phase.

### Please feel free to contact us.



Email us at [clo@sse.com](mailto:clo@sse.com)



Call our Community Liaison Officer, **Seamus Herron** on **087 919 5467**



Write to us at **SSE Renewables, Red Oak South, South County Business Park, Leopardstown, Dublin D18 W688**



Visit our website: [sserenewables.com/drumnahough](http://sserenewables.com/drumnahough)  
or use the QR code below



Follow us on our social media channels

