

Spring 2026 Newsletter

Construction Update

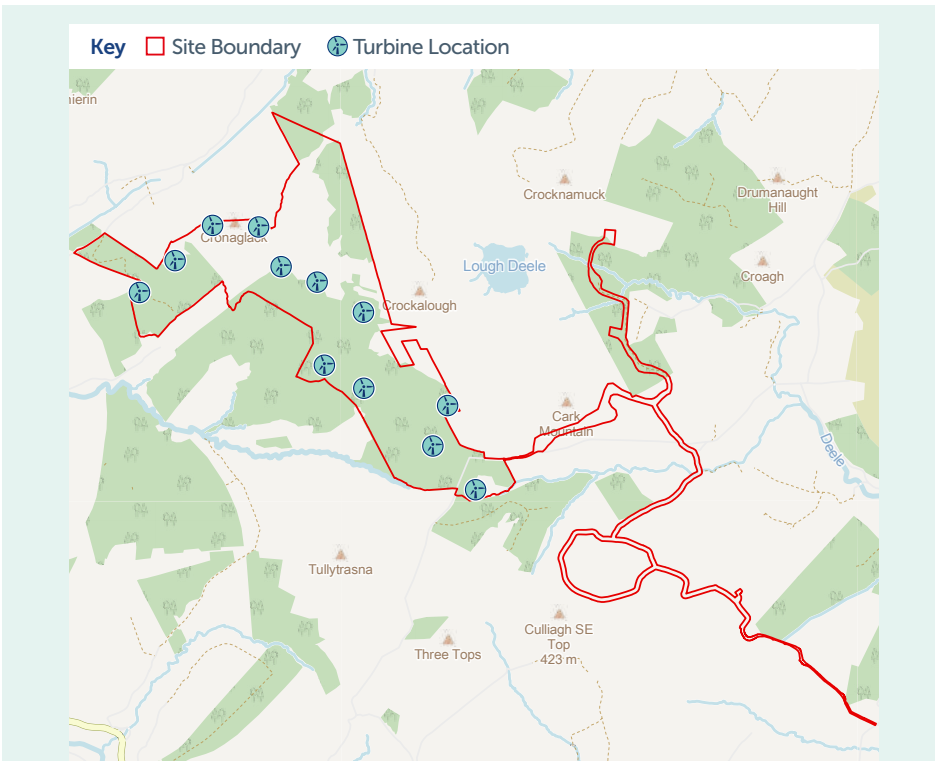
About the Project

Drumnahough Wind Farm is a 12-turbine, 58MW onshore wind project being developed by SSE and FuturEnergy Ireland, approximately 13km south-west of Letterkenny and adjacent to an existing cluster of SSE-owned wind farms. The project received planning permission in September 2022, with construction works commencing in January 2026.

Turbines and ancillary site works will be located in the townlands of Tooslenagh,

Trankeel, Meenadaura, Carrickalangan, Cark, Killymasny, Meentycat, Meenalaban, Culliagh, Tullyhonour and Aughkeely. The wind farm will consist of 12 turbines of 167m tip height, and will contribute towards Ireland's 2030 renewable energy targets.

SSE Renewables is leading the development and construction of the project and will operate the wind farm on completion.



Map 1: Site layout for Drumnahough Wind Farm including site boundary (red line) and the 12 turbine locations.

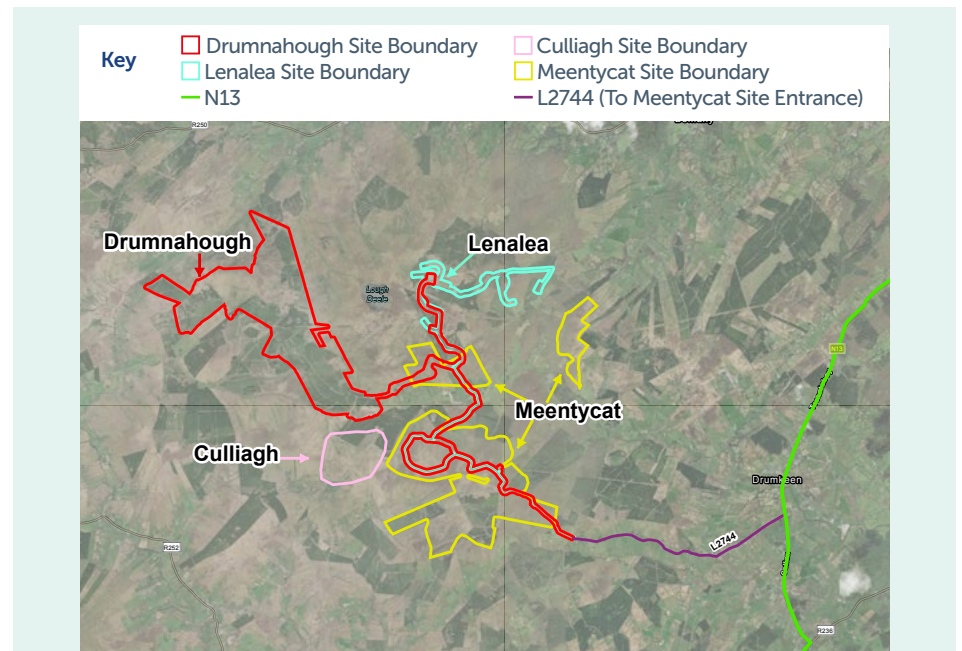
Project Updates

In early November, SSE and FuturEnergy Ireland announced the start of pre-construction works on Drumnahough Wind Farm. Later that month, we announced that Nordex were awarded the contract to manufacture and install 12 onshore turbines. In addition, Sorensen Civil Engineering were appointed to deliver the Civil Balance of Plant (CBoP) contract and Omexom the Electrical Balance of Plant (EBoP) contract.

The main construction works for Drumnahough Wind Farm commenced in January. Since then, works have continued including: tree felling, ongoing environmental surveying, preparation and installation of internal site access

tracks and hardstands, installation of construction compounds and preparation of borrow pits to break apart bedrock within on-site excavation areas.

From approximately mid-May, construction will progress to the concrete pouring of foundation bases, carried out on a phased basis over the coming months and targeted to conclude in the Autumn. This stage of works will involve an increase in construction traffic using the existing site access road from the N13 to the Meentycat Wind Farm entrance. A Traffic Management Plan is in place to manage vehicle movements safely and to reduce any potential inconvenience for local road users.



Map 2: Site boundaries of the respective Drumnahough (in-construction), Lenalea, Meentycat and Culliagh wind farms. The three wind farms neighbouring Drumnahough are fully operational and managed by SSE.

Project Benefits

Climate & Energy Security

Onshore wind farms such as Drumnahough Wind Farm play a vital role in Ireland’s transition to a cleaner, more sustainable energy system. The project will contribute to the delivery of Ireland’s legally binding climate targets by providing renewable electricity, reducing reliance, reducing reliance on fossil fuels, strengthening energy security, and supporting national and local climate objectives.

Economic

Drumnahough Wind Farm represents a €120 million investment and will deliver significant economic benefits locally. The project will support around 60 full-time direct jobs at peak construction, with further employment through the local supply chain. Once operational, annual commercial rates paid to Donegal County Council will support the provision of local services and infrastructure.

Key Benefits



€120 million capital investment



Provide up to 58MW of green, renewable energy



Investment in the local economy & communities



Creation of approximately 60 jobs



Contribute to Ireland’s binding climate targets



Significant annual Community Benefit Fund



Community Benefit Funding & Construction Fund

Community Benefit Fund

Drumnahough Wind Farm will have a substantial community benefit fund, once the wind farm becomes operational. This fund will be delivered under government best practice, designed in consultation with the local community and will help promote a range of community development, energy efficiency, climate action and other initiatives.

Local consultation on the fund will likely begin in late 2026. Following the example of our Lenalea Wind Farm Community Benefit Fund, this is expected to comprise of extensive local engagement and the establishment of a Committee which will be made up of members of the local community surrounding Drumnahough Wind Farm. The Committee will be the decision-making body for the fund. A Consultation Report will be published after the establishment of the Committee, followed by the publication of a Community Benefit Funding Strategy

and an initial call for funding applications after Drumnahough Wind Farm becomes operational.

SSE already has a strong track record of delivering community benefit funding in County Donegal and has operated its Meentycat-Culliagh Fund since 2007, while the Lenalea Wind Farm Fund distributed two rounds of funding last year, following the wind farm becoming operational in late 2023.

Construction Fund

A separate Construction Fund is also available to support local community projects and initiatives during the construction phase of Drumnahough Wind Farm. This fund will remain for the duration of construction only and is separate from both the project’s forthcoming community benefit fund and other SSE community benefit funds in County Donegal. Groups wishing to apply for funding can email clo@sse.com for further information.



Project Timeline and Stakeholder Engagement

Through ongoing engagement and clear communication, we aim to ensure our projects are delivered responsibly and in a way that supports local areas.

Preparatory works at Drumnahough Wind Farm commenced in late 2025, we held two information events in December regarding the construction phase of the project and the main construction works commenced in January. SSE Renewables and FuturEnergy Ireland are working together to construct the project in a manner that minimises disruption to the local community from the start of construction through to completion and into operations.

Our Community Liaison Officer, Seamus Herron, is based locally and is available to engage with local stakeholders and members of the community. We will continue to issue regular updates to near neighbours and other local stakeholders through issuing of letters and newsletters.

An indicative timeline and key project milestones for the construction phase of Drumnahough Wind Farm are outlined to the right.



SSE Renewables is a leading developer and operator of renewable energy generation, focusing on onshore and offshore wind farms, hydro-electric power and flexible battery storage technologies. It is part of electricity infrastructure company SSE plc, a FTSE100 company with operations across the UK and Ireland, and a presence in carefully selected international markets. SSE Renewables delivers clean power assets to increase SSE's operational renewable generation capacity as part of the company's five-year investment plan to 2030. This includes delivery of the world's largest offshore wind farm in construction, the 3.6GW Dogger Bank Wind Farm. SSE Renewables operates some of the leading onshore wind farms in Ireland including the 174MW Galway Wind Park in Connemara and the 73MW Slieve Kirk Wind Park outside Derry City.



FuturEnergy Ireland is a leading Irish wind developer established in 2021 as a standalone joint venture between Coillte and the ESB. The company was formed to maximise the potential of Ireland's unique wind and land resources and accelerate Ireland's transformation to a low carbon energy economy.

FuturEnergy Ireland is targeting the development of 1GW of renewable energy by 2030 by advancing high quality, carefully considered onshore wind and battery storage projects. These projects, once delivered, would power an estimated 730,000 homes annually, make a significant contribution to Ireland's commitment to produce 80% of electricity from renewable sources by the end of this decade, and deliver material emissions reductions.

Contact Us



Email our Community Liaison Officer, Seamus Herron, at clo@sse.com



Write to us at SSE Renewables, Red Oak South, South County Business Park, Leopardstown, Dublin D18 W688



Visit our website: sserenewables.com/drumnahough
or use the QR code below



Follow us on our social media channels